

YEAR 2009

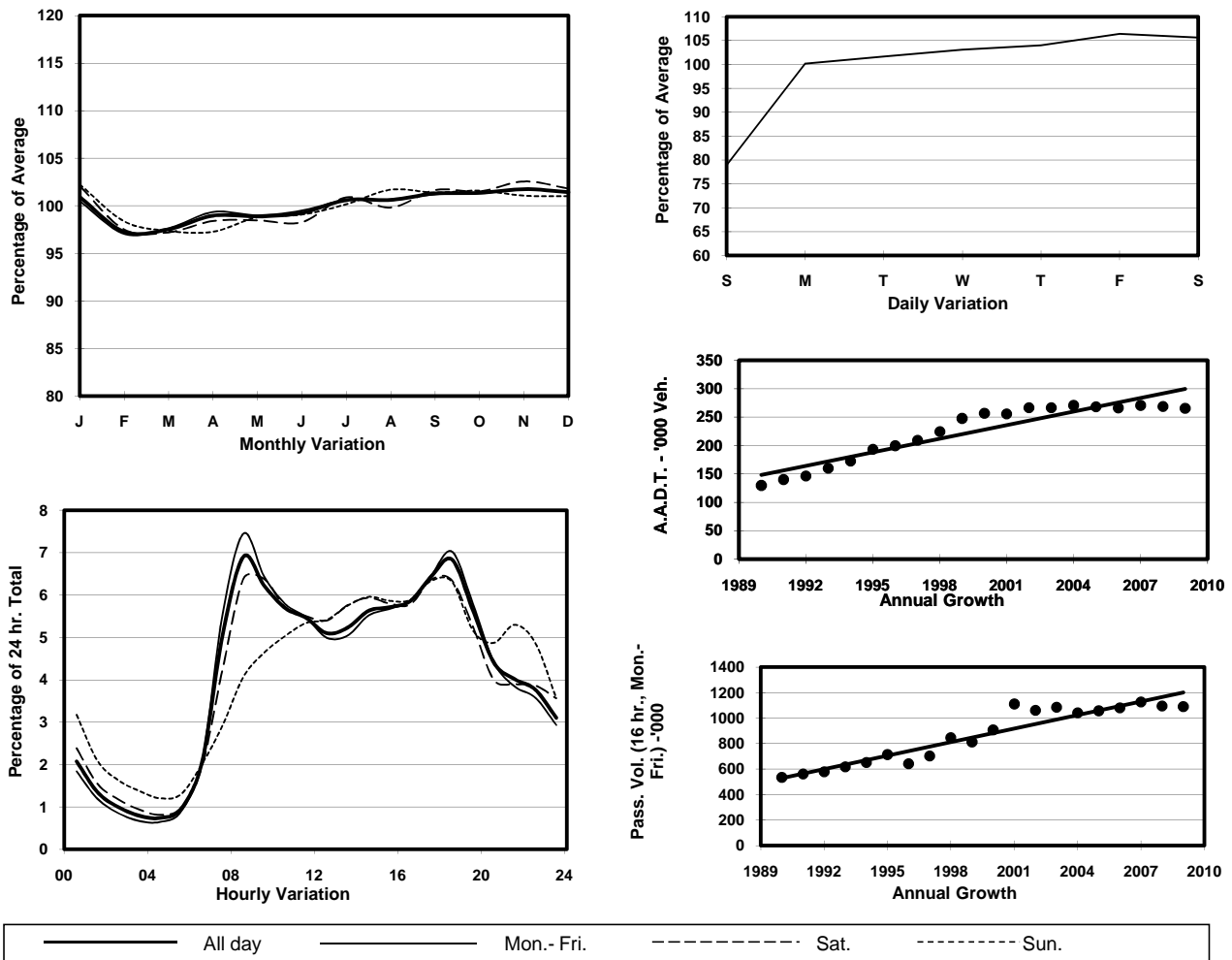
Location

Screenline S-S(East end of Tuen Mun & Yuen Long)

Stations on Cordon/Screenline

5012, 5016, 5029, 6207, 6208 and 6209

1. TRAFFIC FLOW VARIATION AND GROWTH



2. TRAFFIC CHARACTERISTICS (BY DIRECTION)

Parameter	All - Day	Mon. - Fri.	Sat.	Sun.
EAST BOUND				
A.A.D.T.	134070	139990	143110	106370
R 12 / 24 - %	73.2	74.4	72.4	66.5
R 16 / 24 - %	88.6	89.4	87.7	84.8
AM Peak Hour	0800-0900	0800-0900	0800-0900	0900-1000
One-way flow at AM peak hour	10790	12110	10840	5410
T - % (AM)	-	25.3	-	-
PM Peak Hour	1700-1800	1700-1800	1700-1800	1700-1800
One-way flow at PM peak hour	8530	8960	8920	6720
T - % (PM)	-	30.9	-	-
Prop.of commercial vehicles - 16 hr.	-	28	-	-
WEST BOUND				
A.A.D.T.	131320	136740	140750	105510
R 12 / 24 - %	67	68.1	66.8	60.5
R 16 / 24 - %	87.3	88.4	85.6	82.6
AM Peak Hour	0800-0900	0800-0900	0900-1000	0900-1000
One-way flow at AM peak hour	7550	8500	7630	4420
T - % (AM)	-	28.1	-	-
PM Peak Hour	1800-1900	1800-1900	1800-1900	1800-1900
One-way flow at PM peak hour	9750	10480	9680	6930
T - % (PM)	-	21.8	-	-
Prop.of commercial vehicles - 16 hr.	-	28	-	-

3. OTHER INFORMATION AND COMMENT

4. Vehicle classification and occupancy - Monday to Friday

Time		Class of vehicle									
		Motor	Private	Taxi	Private	PLB	Goods veh.		Non	Fr. Bus	
		Cycle	Car		LB		Light	M & H	Fr. Bus	SD	DD
0700-0800	Pro	2.7	33.9	6.6	0.7	5.0	20.8	18.3	6.3	0.2	5.5
	Ocp	1.1	1.4	2.1	7.2	12.4	1.6	1.1	23.9	27.3	61.3
0800-0900 Peak Hour	Pro	2.0	45.7	6.1	0.5	3.2	16.2	17.0	4.8	0.1	4.5
	Ocp	1.0	1.5	1.9	4.0	12.3	1.6	1.2	31.0	23.4	62.7
0900-1000	Pro	1.2	38.5	5.4	0.7	3.1	21.3	21.9	3.2	0.1	4.5
	Ocp	1.1	1.4	1.8	2.7	10.7	1.5	1.2	19.0	18.3	33.2
1000-1100	Pro	0.9	34.8	4.2	1.0	3.4	22.7	26.2	2.6	0.1	4.3
	Ocp	1.1	1.4	1.8	2.7	9.5	1.5	1.2	19.6	14.7	31.3
1100-1200	Pro	1.0	35.4	5.5	0.8	3.5	22.8	24.2	2.5	0.1	4.2
	Ocp	1.0	1.4	1.9	2.1	8.8	1.4	1.2	19.9	13.1	28.8
1200-1300	Pro	1.1	37.4	5.1	1.1	3.2	19.3	25.1	3.0	0.2	4.7
	Ocp	1.0	1.5	2.0	4.8	9.5	1.6	1.2	16.7	16.1	29.3
1300-1400	Pro	1.3	33.6	4.3	0.6	3.1	23.6	26.7	2.2	0.1	4.5
	Ocp	1.0	1.6	2.0	2.7	10.3	1.5	1.2	16.0	12.6	32.7
1400-1500	Pro	1.0	34.9	5.0	0.6	3.0	22.2	26.7	2.4	0.1	4.0
	Ocp	1.0	1.5	2.0	2.4	10.5	1.5	1.2	16.1	15.7	27.7
1500-1600	Pro	1.1	36.7	4.0	1.2	2.7	24.8	22.7	2.9	0.1	3.8
	Ocp	1.0	1.5	1.9	3.8	10.3	1.6	1.2	19.8	11.6	28.9
1600-1700	Pro	1.0	36.7	4.8	1.2	2.7	23.0	22.9	3.3	0.1	4.3
	Ocp	1.2	1.5	1.8	3.7	10.8	1.6	1.2	17.8	15.9	33.9
1700-1800	Pro	2.2	38.2	4.7	1.2	2.6	21.3	21.4	3.2	0.2	5.0
	Ocp	1.0	1.6	2.1	4.1	13.3	1.6	1.1	20.2	19.6	47.3
1800-1900	Pro	2.4	50.9	5.1	0.6	3.5	15.2	13.2	4.5	0.1	4.4
	Ocp	1.1	1.5	2.0	2.7	13.8	1.6	1.1	27.0	26.5	64.8
1900-2000	Pro	1.7	58.0	5.1	0.3	3.5	10.8	11.4	4.6	0.1	4.6
	Ocp	1.1	1.5	1.9	1.4	11.9	1.4	1.1	21.7	19.6	55.9
2000-2100	Pro	1.8	56.0	6.7	0.3	4.4	9.2	12.7	4.0	0.1	4.9
	Ocp	1.1	1.5	1.9	1.1	11.0	1.5	1.1	20.4	18.4	41.4
2100-2200	Pro	1.9	54.5	9.2	0.2	4.7	8.8	11.0	3.6	0.2	6.0
	Ocp	1.1	1.5	1.9	1.7	10.4	1.5	1.1	19.9	11.6	35.4
2200-2300	Pro	1.9	56.1	11.2	0.4	4.2	8.6	8.5	2.8	0.2	6.0
	Ocp	1.1	1.5	1.8	3.1	11.0	1.5	1.2	16.3	10.0	37.8
16 hours	Pro	1.6	42.1	5.6	0.7	3.4	18.6	19.7	3.5	0.1	4.6
	Ocp	1.1	1.5	1.9	3.5	11.2	1.5	1.2	21.7	17.7	42.4

Legend

- Pro.** Proportion of vehicles in % (Sum may not add up to 100% due to figure rounding)
- Ocp.** Average occupancy of vehicles
- M & H** Medium and Heavy